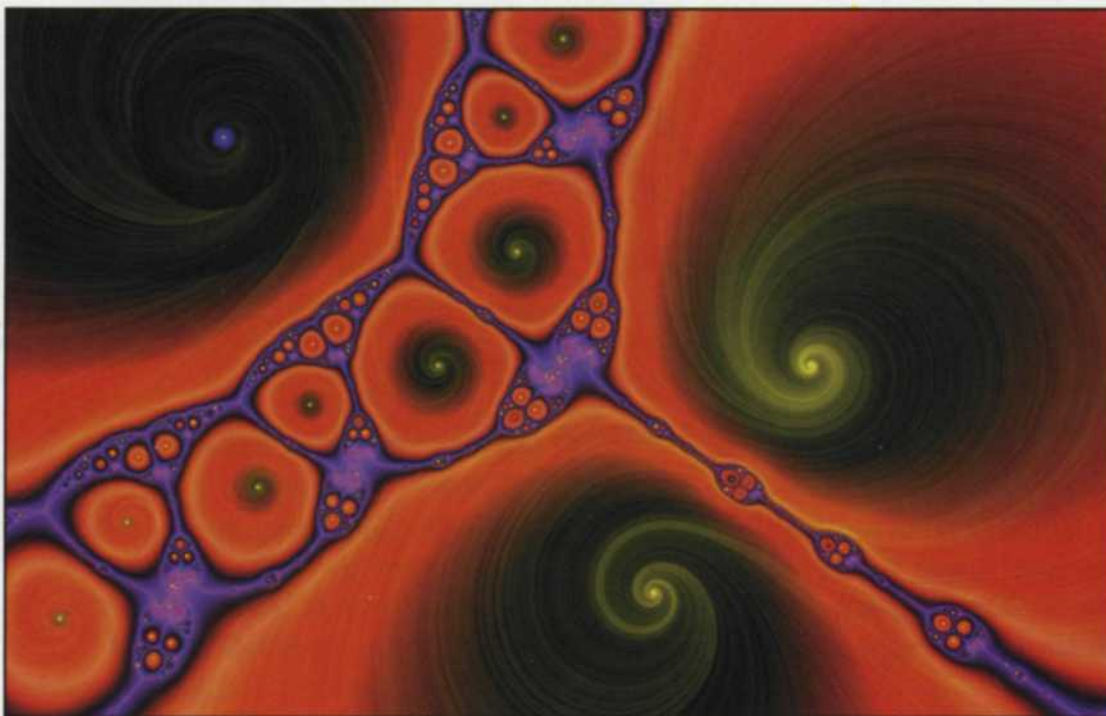




Scanned image into Painter. Flowers were added to bottom of photo with an editing brush called a "Image Hose." Different versions of a small flower bitmap were created with this brush. A second leaf image hose brush was used to apply the leaves to the top of the picture. As you apply the brush the random versions appear on the screen.



This image was created in Painter using multiple special effects filters on selected layers of the image.



Fractal image created in Painter 5.5 using the KPT5 special effects Fraxexplorer function.



This image was created with the KPT5 FraxFlame function in Painter 5.5. This special effects filter varies the color, size, and shape of the flames with various sliders located in the filter.

MetaCreations 2D and Beyond

The art and science of digital photography is gradually becoming more accepted by professional photographers. The main hardware, scanners and cameras, are still on a steep upward spiral towards higher resolutions and faster image processing. Yet, they are becoming less expensive to

buy. Software is also improving with every never-ending version they release. We are at the point where manufacturers simply tweak the software from version to version, there generally are not many earth-shattering new designs.

Look how few newcomers you find on the editing software shelf. Most manufacturers approach photo editing in a similar fashion, with the exception of Meta-

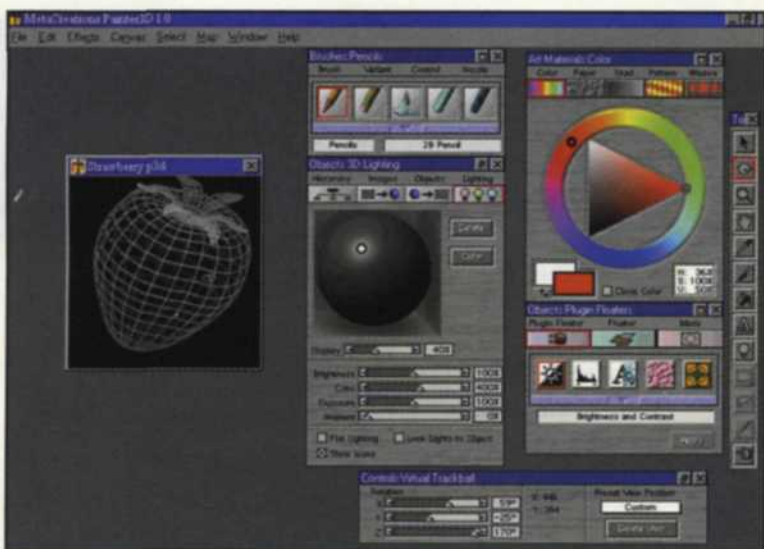
Creations Corporation. Over the past few years, MetaCreations has become a respected leader in image editing, offering an impressive array of software programs that cover both 2D and 3D imagery. When we first tackled the task of reviewing the MetaCreations group, we soon realized it would be impossible to encompass it all in one article. So, logically we decided to split the review into the



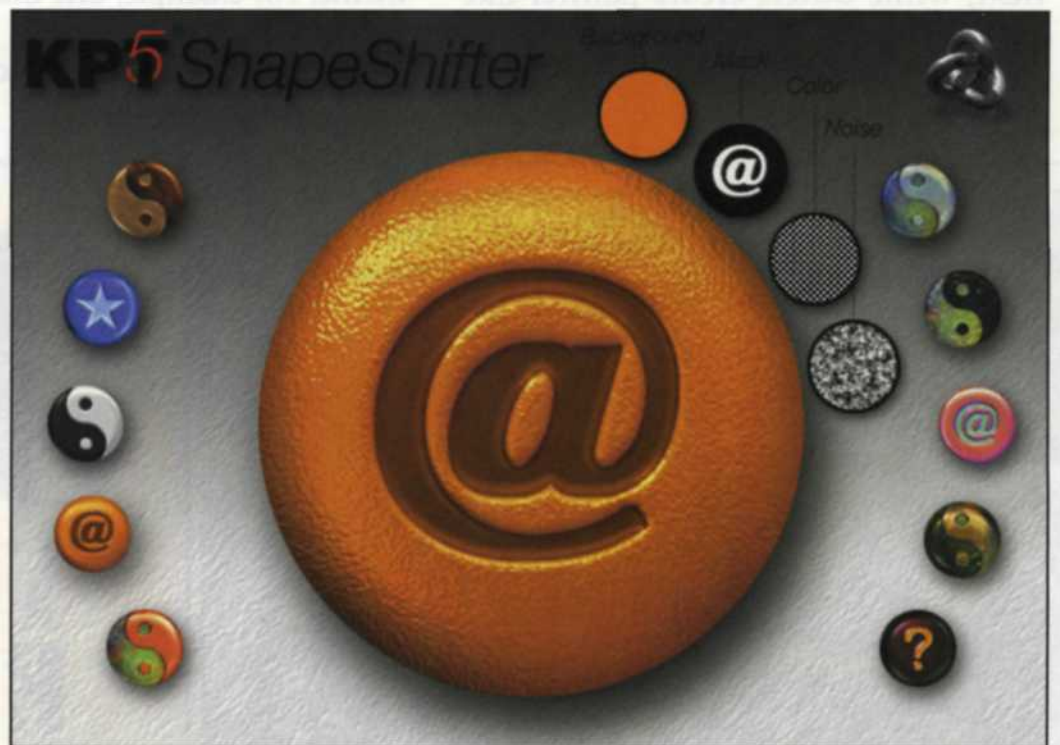
Mask of guitar was loaded into Painter 5.5. Textures were added, and then the ShapeShifter KPT5 plug-in was used to give a 3D look to the shapes.



The text was first applied to the screen using the text function. The liquid metal brush was then used to draw over the top of the text.



Screen shot of a 3D model in the modeling edit screen. Texture and color is applied at this point before the final image is rendered.



A button mask was loaded into Painter 5.5, and then the KPT5 ShapeShifter was used to give the button color and a 3D look. One of the primary function of this effect is creating WEB page buttons.

2D and 3D programs, beginning with the 2D Painter series and Kai's Power Tool plug-ins.

Painter

At present, the Painter series consists of three similar editing programs that offer an artistic approach to image editing using a vast series of special digital paint

brushes—hence the name. The largest program is called Painter 5.5 Web Edition, and includes just about everything you will find in any other editing program plus a whole lot more. A smaller version of the program without the Web functions is called Painter Classic. The third program, Painter 3D, starts to cross the bridge to 3D editing.

Each of the three programs have all the

traditional toolbox and pulldown controls for contrast, brightness, color correction, gamma, and sharpness. They also have all the standard special effects filters—you know the ones—emboss, posterize, warp, twirl, and blur. In fact, the entire series of Painter programs can use any of the plug-ins normally used in Adobe Photoshop, including MetaCreations' own plug-in filters, called Kai's

Power Tools, or KPT series.

As we said earlier, what makes the Painter programs so unique is all the additional functions using the digital brush. The bulk of Painter's brushes vary in width, texture, transparency, color, grain, fading, and other variations. Painter uses brushes to simulate pencils, eraser, chalk, pens, crayons, liquid, airbrush, water color, and a very unique brush called an image hose. Each of these brushes has more than a dozen control sliders to adjust everything including pressure, direction and velocity of each brush. It's almost like a painter mixing a little of this and a little of that to get just the right brush strokes.

Another group of brushes creates transitional effects in the image. The popular clone tool gets rid of the scratches, dust, and any other artifacts brought into the digital world. Painter uses dozens of clone tools to perform miracles. Some simply copy information from one area to the next, while others create painter-like effects simulating Van Gogh and turning your photos into artwork.

The Super Cloner pulls data from another image and loads it in as a texture. With this tool, you can start with a white background and paint part of the picture onto the white as though it were an unfinished painting.

This creative program has a built-in tracing paper that lets you use a brush over the top of a standard photo. When you are done, you can separate the two and you have a tracing of your photo.

Another interesting brush is the liquid metal. The resulting brush strokes look like liquid silver or gold dripping on your photo. If you want to use silver metal lettering, simply type in your text and then use the liquid metal brush to trace over the letters.

Our favorite brush is, as mentioned, the image hose, which is represented by an icon of a hose with a large nozzle on the end. When you start to move this brush over the surface of a photo, it pours out random images relating to a specific theme. For example, one image hose has orange poppies at different heights and angles to create a natural bed of poppies.

Another image hose sprays different colored Easter eggs onto the image. The program has a series of sub-menus for creating your own image hoses.

As avid scuba divers, we wanted an image hose of fish, so we scanned in 20 different fish images. We grouped them together as instructed, and saved it as an image hose file. Now we can brush on random images of fish into any scene. You can also add drop shadows to each image and feather them so they blend better into the background.

Painter 3D goes beyond 2D with the ability to import 3D models. Once they are imported to the edit screen, you can use brushes to coat the various surfaces of the model and rotate it to the angle you want to render into a 2D scene. Painter 3D is very much like Painter Classic in every other way.

KPT Plug-ins

The Painter programs are even better when you add the plug-in filters found on the KPT 5 CD-ROM. This collection of

Coming Spring 2000!
Visit our new location at
6400 Sunset Blvd
(across from the Cinerama Dome).

YOUR STORE FOR THE NEW MILLENNIUM!

CAMERAS / FILM / LIGHTING / DARKROOM / DIGITAL & MORE

Freestyle Sales Co.

5124 Sunset Blvd. Los Angeles, CA 90027
www.freestylesalesco.com
Phone: (323)660-3460 • Fax: (323)660-4885
Call for our free catalog

For more information, circle 132

3
Y
E
A
R
S

F
O
R

\$14

**Holiday
1/2 Price Special**

- | | |
|---|---|
| <p><i>Subscribe to
RANGEFINDER
Magazine
for the latest
information on
professional
photography:</i></p> | <ul style="list-style-type: none"> ✓ New Equipment ✓ Technical How-To Features ✓ Professional Profiles ✓ Business Management ✓ New Products ✓ Digital Technology... ✓ And Much More! |
|---|---|

O R D E R T O D A Y !

<input type="checkbox"/> NEW SUBSCRIPTION	<input type="checkbox"/> RENEWAL
<input type="checkbox"/> 3 Years \$14	Outside the USA: <input type="checkbox"/> 3 years \$44

PAYMENT: CHECK VISA MasterCard Discover AMEX

Bank credit card number Expiration Date

Mo/Yr

Card Holder's Signature _____ Phone # () _____

Subscriber's Name _____ Title _____

Company Name _____

Address _____

City _____ State _____ Zip _____

Country _____

Please check one: My primary field is:

Commercial Industrial Portrait Wedding/Special Event School

Sports/Memory Mate Other (please specify) _____

Mail To: RANGEFINDER, Circulation Department., P.O. Box 1703, Santa Monica, CA 90406

Offer expires 2/29/00

For more information, circle 100

high quality plug-ins can be added to the plug-in directory in Adobe Photoshop, Corel Paint 9, or MetaCreations Painter.

The KPT 3 plug-ins have been out for some time and were always popular with photographers using editing programs. The 18 original KPT 3 filters are split between technical changes and the creative edge. Enhanced control of contrast, noise, blurring, sharpness, and color are just some of the technical applications. On the creative side, plug-ins include options to make your image into hundreds of images on a flat plane, or in a vortex. Others variations create gradient backgrounds, add textures, spheres, or give the image a page curl.

Most of the 10 new KPT 5 plug-in filters create separate images you can later combine with an image you are editing. Some filters are actually quite bizarre. FraxPlover has millions of possible 2D fractal images at any resolution you desire. Frax4D is a 3D fractal generator that makes images look like pieces of melted glass.

If you want some really different images for backgrounds, either KPT plug-in will

do the job. Blur does just what it sounds like, but with more variations than a standard blur filter. Noise adds texture and detail while the RadWarp plug-in gives you endless ways of distorting an image. Smoothie takes the jaggies out of line art when it is scanned into the system. FraxFlame creates unusual lighting effects, similar to the northern lights or fireworks. FiberOptix grows hair and fur on whatever area you select in your image. We told you some of them were bizarre!

We really like the Orb-It plug-in, as it creates spheres and will reflect any other image or texture you want to add to it. We think the most practical of the KPT 5 plug-ins is the ShapeShifter. You can take any shape mask, add 3D bevels, shiny lighting and soft shadows. These are great for making WEB pages, where you need lots of fancy buttons, arrows, and related internet page links. You can also make some interesting text that looks like it is standing up off the page. We use more than a half dozen editing programs in our digital lab. Mainly this is because we have to stay up-to-date on all the latest

offerings from software manufacturers to keep you informed. We also find that we often like the different features each software has to offer. Many of the ways MetaCreations handles menus, pull downs, and related menus are quite different than programs like Adobe PhotoShop. This just makes it a little harder to get used to and you may actually have to read the Painter manual. If you're as impressed with Painter 5.5 Web Edition and KPT 5 as we are, just wait until you see the 3D editing programs from MetaCreations. In an upcoming article we will review Bryce 4, RayDream Studio 5 and Conoma. Stay tuned as the world turns and 2D meets 3D.

For further information, contact MetaCreations Corporation (805) 566-6200 or check them out on the Internet at [www.metacreations.com].

Jack and Sue Drafaahl are freelance journalists/photographers living in the Pacific Northwest. They have owned and operated a custom lab and service bureau, Image Concepts, for many years. They can be reached at: concepts@pacifier.com/.

RANGEFINDER
NETWORK
STAY INFORMED
LOG ON TODAY!
www.rangefinder-network.com

Our new house blend packs a lot of kick.

Take unparalleled power and match it with precise microcomputer circuitry, mate it with a durable flash tube that has withstood the test of time, give it an innovative beam angle focusing ring then blend it all together into a lightweight, fan-cooled monolight that delivers more light than anything in its class.

The Force 10 monolight

Power: 1000 Ws

Output: GN 540 at ISO 100 at 10' with standard 11.5" reflector (comparable output to other monolights claiming 1800 Ws or more)

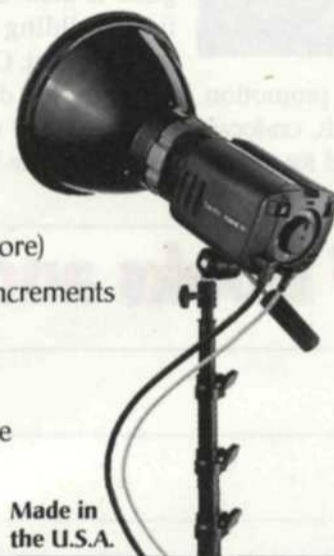
Range: 8 f-stops, in 1/3 or 1/6 stop increments

Recycle: 1-1/2 seconds at full power

Weight: 8 lbs.

Accessories: all Speedotron BlackLine and Brown Line light control and support accessories

Made in the U.S.A.



Speedotron

310 S. Racine Ave., Chicago, IL 60607
312/421-4050 • fax 312/421-5079
e-mail: speedotron@aol.com
www.speedotron.com